

**Fund Symbols:** I: HGXIX A: HGXAX C: HGXCX F: HGXFY R3: HGXRX R4: HGXSX R5: HGXTX R6: HGXXY Y: HGXXY

# Invest in a Better World

Seeing some of the world's biggest challenges as a world of opportunity

## Impactful Investing

The Hartford Global Impact Fund seeks to deliver competitive financial returns by investing in companies aiming to make a measurable impact to benefit people and the planet.

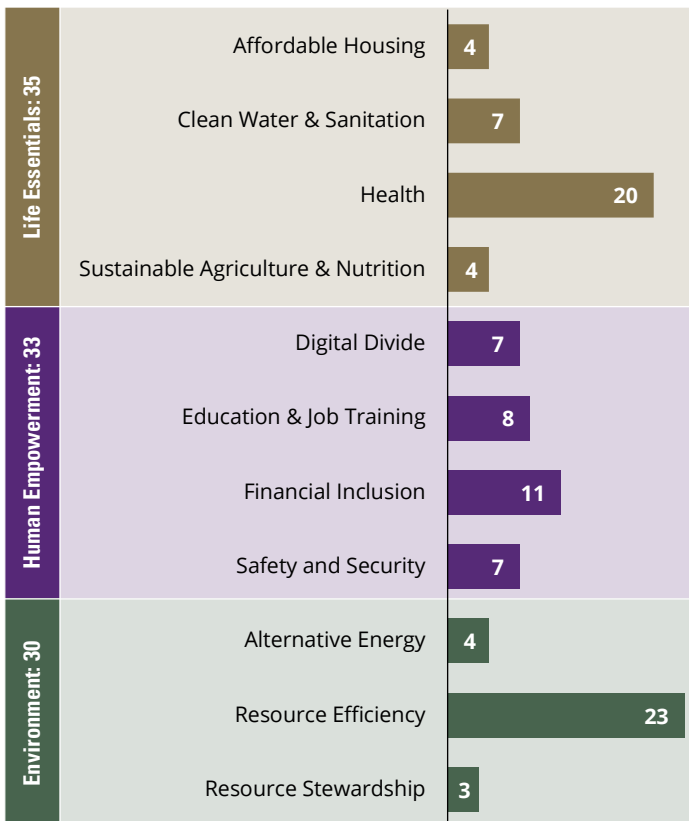
## Untapped Opportunities

The Fund targets impact companies: companies the investment team believes are likely to address some of the world's major social and environmental challenges in a differentiated way through their core products or services.

## Enhanced Diversification

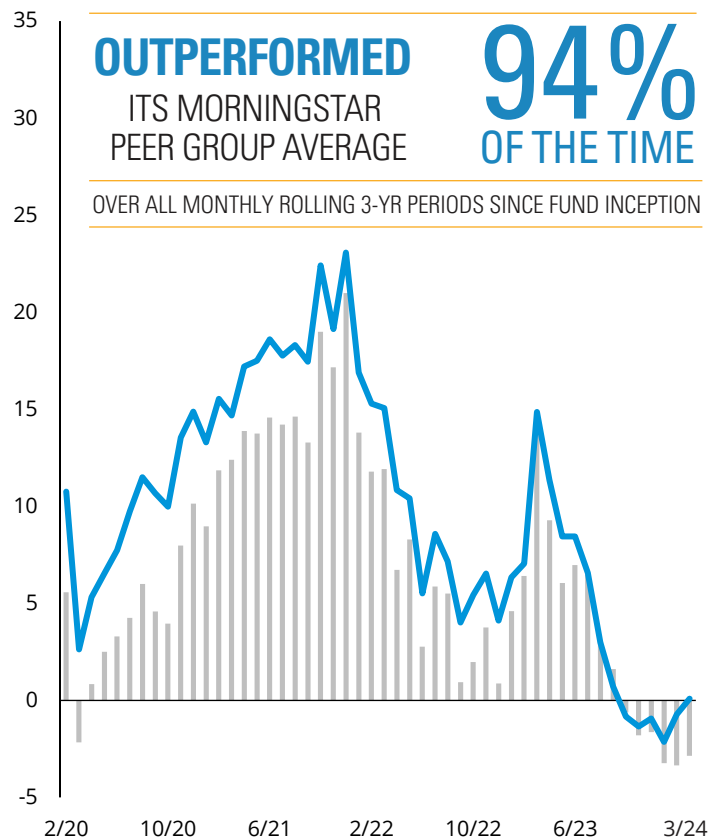
Impact companies can be found across countries, sectors, and market-capitalization ranges to help further diversify your overall investment portfolio.

## Making an Impact...



Impact Category and Theme Weights (%) as of 3/31/24.

## ...Without Sacrificing Return



**Past performance does not guarantee future results.** Fund Inception: 2/28/17.  
Source: Morningstar, 4/24.

**Overall Morningstar Rating\* (I-Share)**



135 Products | Global Small/Mid Stock Category Based on Risk-Adjusted Returns as of 3/31/24

**Portfolio Managers from Sub-Adviser Wellington Management**

**Jason Goins, CFA**

Senior Managing Director  
Equity Portfolio Manager  
Professional Experience Since 2001

**Tara C. Stilwell, CFA**

Senior Managing Director  
Equity Portfolio Manager  
Professional Experience Since 1994

The portfolio managers are supported by the full resources of Wellington.

**Top Ten Holdings**

Company	Impact Theme	%
Xylem, Inc.	Clean Water & Sanitation	3.26
Westinghouse Air Brake Technologies Corp.	Resource Efficiency	3.25
Boston Scientific Corp.	Health	3.15
Trane Technologies PLC	Resource Efficiency	2.92
GoDaddy, Inc.	Digital Divide	2.75
Hubbell, Inc.	Resource Efficiency	2.68
Abbott Laboratories	Health	2.51
Globe Life, Inc.	Financial Inclusion	2.39
Schneider Electric SE	Resource Efficiency	2.17
Danaher Corp.	Health	2.14
<b>Percentage Of Portfolio</b>		<b>27.22</b>

Holdings and characteristics are subject to change. Percentages may be rounded.

**Performance (%) as of 3/31/24**

	YTD	Average Annual Total Returns			
		1 Year	3 Year	5 Year	Since Inception (2/28/17)
Hartford Global Impact Fund I	3.71	13.04	0.08	8.61	9.31
MSCI ACWI Index	8.20	23.22	6.96	10.92	—
Morningstar Global Small/Mid Stock Category Average	2.12	8.81	-3.42	7.41	—

**Expenses<sup>1</sup>** Net: 0.88% Gross: 0.88%

Performance data quoted represents past performance and does not guarantee future results. The investment return and principal value of an investment will fluctuate so that an investor's shares, when redeemed, may be worth more or less than their original cost. Current performance may be lower or higher than the performance data quoted. For more current performance information to the most recent month ended, please visit [hartfordfunds.com](http://hartfordfunds.com).

\*Class I-Shares Star Ratings: 3-year 4 stars out of 135 products, 5-year 4 stars out of 119 products for the period ended herein. Other share classes may have different ratings. The Morningstar Rating™ for funds, or "star rating", is calculated for funds and separate accounts with at least a 3-year history. Exchange-traded funds and open-ended mutual funds are considered a single population for comparative purposes. Star rating based on a Morningstar Risk-Adjusted Return measure that accounts for variation in a managed product's monthly excess performance (without adjusting for any sales load, if applicable), placing more emphasis on downward variations and rewarding consistent performance. 5 stars are assigned to the top 10%, 4 stars to the next 22.5%, 3 stars to the next 35%, 2 stars to the next 22.5%, and 1 star to the bottom 10%. Overall Morningstar Rating is derived from a weighted average of the performance figures associated with its 3-, 5-, and 10-year (if applicable) Morningstar Rating metrics. For more information about the Morningstar Fund Ratings, including their methodology, please go to [global.morningstar.com/managerdisclosures](http://global.morningstar.com/managerdisclosures). ©2024 Morningstar, Inc. All rights reserved. The information contained herein: (1) is proprietary to Morningstar and/or its content providers; (2) may not be copied or distributed; and (3) is not warranted to be accurate, complete or timely. Neither Morningstar nor its content providers are responsible for any damages or losses arising from any use of this information.

<sup>1</sup> Expenses as shown in the Fund's most recent prospectus. Gross expenses do not reflect contractual expense reimbursement arrangements. Net expenses reflect such arrangements in instances when they reduce gross expenses. These arrangements remain in effect until 2/28/25 unless the Fund's Board of Directors approves an earlier termination. Without these arrangements, performance would have been lower.

MSCI ACWI is a free float-adjusted market capitalization index that measures equity market performance in the global developed and emerging markets, consisting of developed and emerging market country indices. MSCI index performance is shown net of dividend withholding tax. Indices are unmanaged and not available for direct investment.

Neither MSCI nor any other party involved in or related to compiling, computing or creating the MSCI data makes any express or implied warranties or representations with respect to such data (or the results to be obtained by the use thereof), and all such parties hereby expressly disclaim all warranties of originality, accuracy, completeness, merchantability or fitness for a particular purpose with respect to any of such data. Without limiting any of the foregoing, in no event shall MSCI, any of its affiliates or any third party involved in or related to compiling, computing or creating the data have any liability for any direct, indirect, special, punitive, consequential or any other damages (including lost profits) even if notified of the possibility of such damages. No further distribution or dissemination of the MSCI data is permitted without MSCI's express written consent.

**Important Risks:** Investing involves risk, including the possible loss of principal. Security prices fluctuate in value depending on general market and economic conditions and the prospects of individual companies. • Small- and mid-cap securities can have greater risks and volatility than large-cap securities. • Foreign investments may be more volatile and less liquid than U.S. investments and are subject to the risk of currency fluctuations and adverse political, economic and regulatory developments. These risks may be greater, and include additional risks, for investments in emerging markets. • The Fund's impact investing focus may cause the Fund to forego certain investment opportunities and underperform funds that do not have a similar focus. • To the extent the Fund focuses on one or more sectors, the Fund may be subject to increased volatility and risk of loss if adverse developments occur.

Diversification does not ensure a profit or protect against a loss.

Investors should carefully consider a fund's investment objectives, risks, charges and expenses. This and other important information is contained in the fund's prospectus and summary prospectus, which can be obtained by visiting [hartfordfunds.com](http://hartfordfunds.com). Please read it carefully before investing.

Mutual funds are distributed by Hartford Funds Distributors, LLC (HFD), Member FINRA. Advisory services are provided by Hartford Funds Management Company, LLC (HFMC). Certain funds are sub-advised by Wellington Management Company LP. HFMC and Wellington Management are SEC registered investment advisers. HFD and HFMC are not affiliated with any sub-adviser.